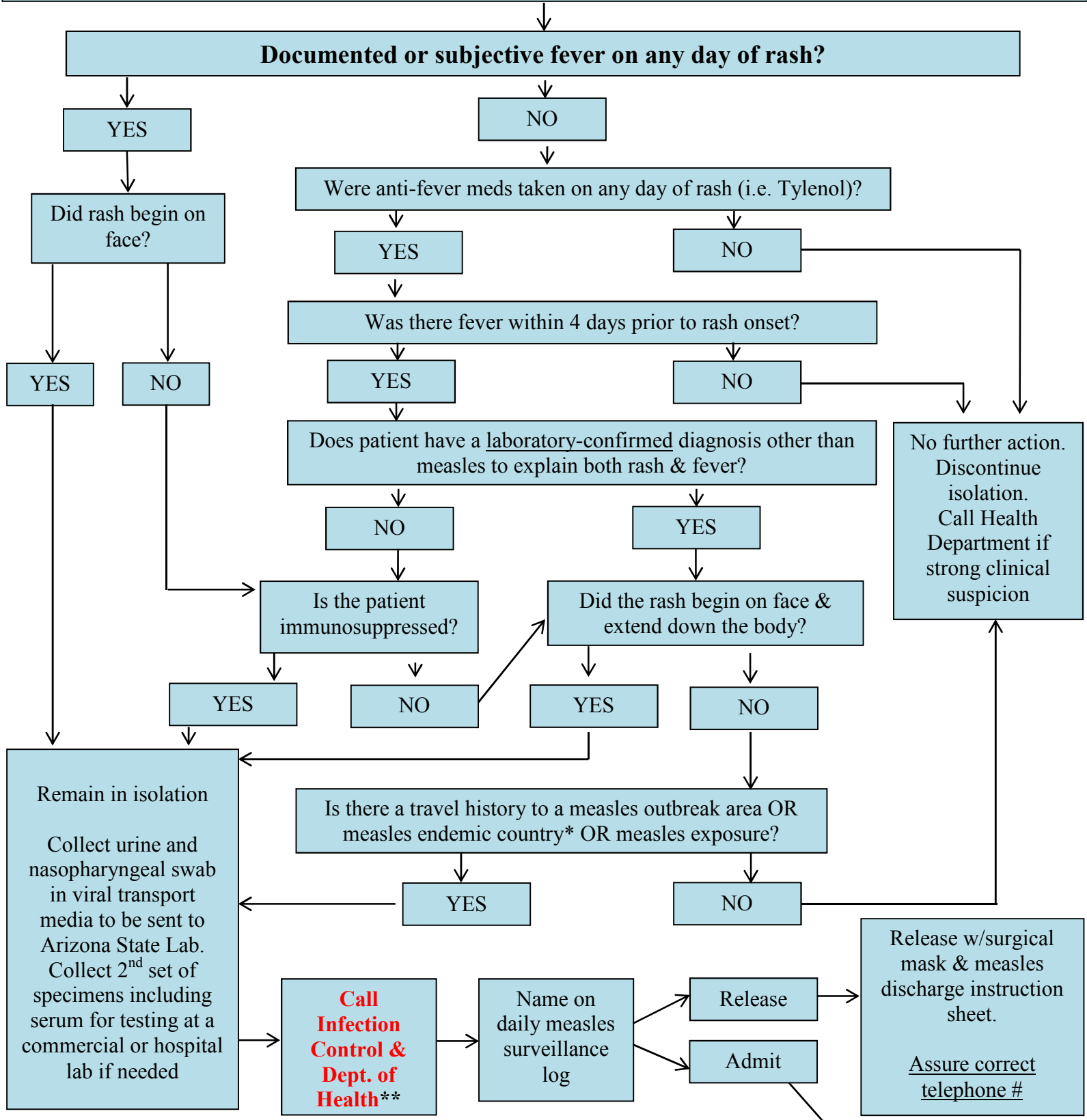




# MEASLES SCREENING TOOL FOR HEALTH CARE FACILITIES

**Anyone with Generalized Rash Must be Masked and Put in Airborne Isolation Room.**  
(Generalized =more than 1 part of body) If airborne isolation room not available, place in private room with closed door.



\*International travel or travel to southern California within last 21 days.

Hospital Infection Control: Tel ( ) \_\_\_-\_\_\_  
**\*\*Report Cases to: Maricopa Department of Public Health**  
Weekdays: 602-506-6767; Evenings/Weekends: 602-747-7111